

# Future market Mobility



## FXFlat Mobile User Guide

I. OVERVIEW 2

II. Enhanced 2

III. INSTALLATION 3

Enhanced Screens 7

Basic 9

Basic Screens 10

III. FAQ 11

## I. OVERVIEW

With FXFLAT Mobile, we deliver the power of FlatTrader® FX to traders who are using wireless technology. In fact, we've created software in a wireless platform that's comparable to most brokers' PC-based applications.

The Enhanced version for Microsoft PocketPC/Windows Mobile users includes standard features, such as live streaming quotes, full-color charting, complete access to real-time transaction history, account statements and position, margin and risk-analysis.

Forex traders have full access to the forex market:

- Place market-orders on tradable prices
- Chart currencies with real-time, streaming quotes\*
- Access live prices on FXFLAT's quoteboard
- Instant access to prices, orders and open positions
- Trade from charts as you track prices tick-by-tick
- FlatTrader® Mobile Enhanced offers [all currency pairs](#)

## II. FXFLAT MOBILE – Enhanced

The Enhanced version also includes a combination of standard and advanced indicators.

Leverage technical indicators, which can be viewed using bars or candles, allowing you to take full advantage a currency pair's historical data. By using the historical charts feature, you can retrieve up to two years of data for most currency pairs.

- Moving Average (simple)
- Moving Average (exponential)
- Weighted Moving Average
- Triangular Moving Averages
- Momentum
- Relative Strength Index
- MACD
- Bollinger Bands
- Commodity Channel Index
- Indicator 75 (FXFLAT proprietary indicator)
- Linear Regression
- Detrend Oscillator
- Ultimate Oscillator

With just a touch of the stylus you can choose the best way to navigate through FlatTrader® Mobile - from an "express view" command to built-in "quick-tabs" allowing you to view the information at a glance, including:

- Quotes
- Messages
- Positions
- Order History
- Transfer History
- Charts and Historic Charts.

If you are not using a pocket PC, FlatTrader® Mobile is available in a Basic version that is compatible with wireless cellular telephones and RIM devices.

### III. Installation

Download the latest release at <http://www.GFTforex.com/products/mobile/enhanced.asp>.

**Please make sure to follow both Steps 1 and 2 for downloading the IBM Java Virtual Machine and the FXFLAT Mobile applications.**

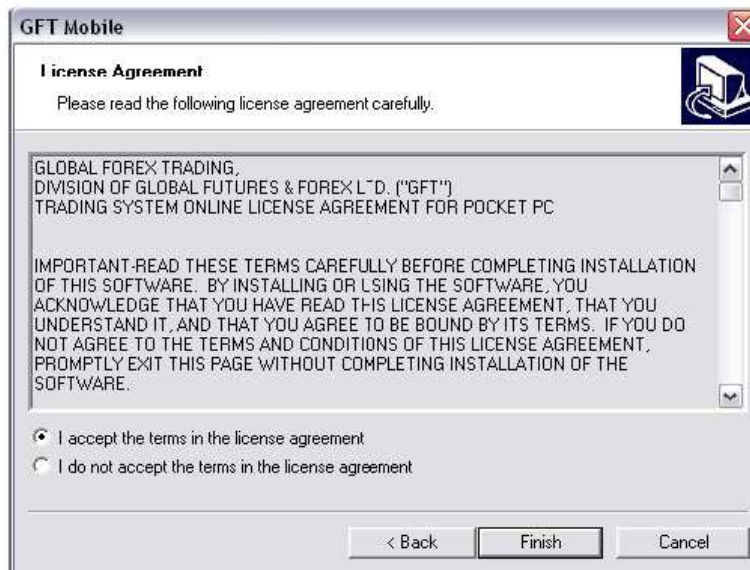
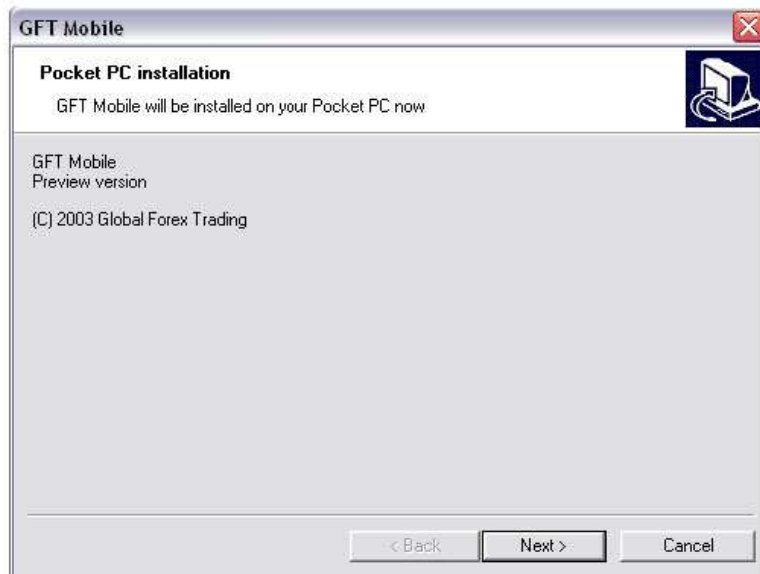
Once you have downloaded both applications, you will be ready to install.

1. Place the PocketPC in the cradle and synchronize with your Desktop PC.



2. First, double-click on the icon labeled "FXFlat-mobile" followed by the version number.

3. Follow the setup window instructions as follows:



4. Select **Yes** to continue the installation.



Press „OK“ for succesfull download.



5. Next, double-click the icon labeled **“j9-jvm”** followed by the version number.

6. Follow the onscreen setup instructions as you did in Step 3 above.

7. Once **both** applications have installed successfully on your mobile device, you are now ready to use FXFLAT Mobile on your PocketPC.
8. Make sure you have disconnected all FlatTrader sessions on your Desktop PC.
9. Go to Start -> Programs then locate the FXFLAT Mobile icon.

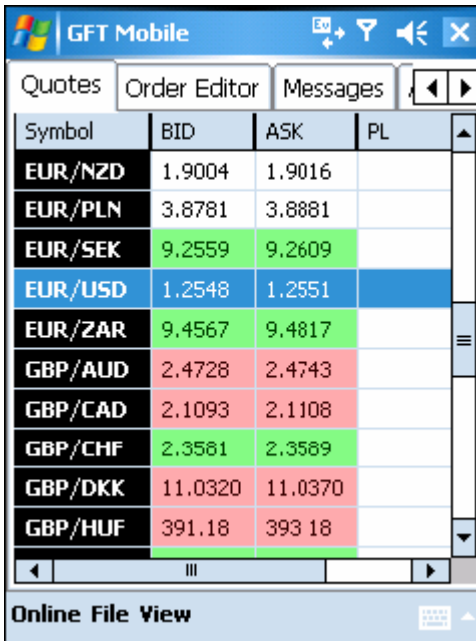


10. Log into FXFLAT Mobile as you would in FlatTrader. Make sure you indicate Live or Demo System. Your device will automatically begin connecting to its data host.



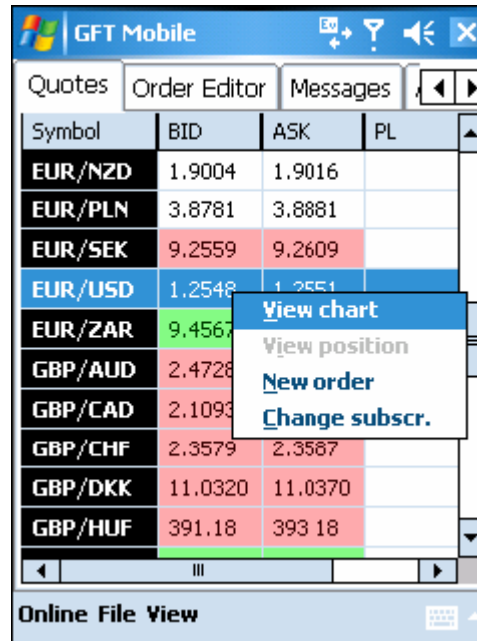
## Enhanced Screens

11. Upon successful login, you will be enter the first tab which contains the Quote Board:



The screenshot shows the 'Quotes' tab in the GFT Mobile application. It displays a table of currency pairs with their respective Bid, Ask, and PL values. The table is color-coded: green for positive PL and red for negative PL.

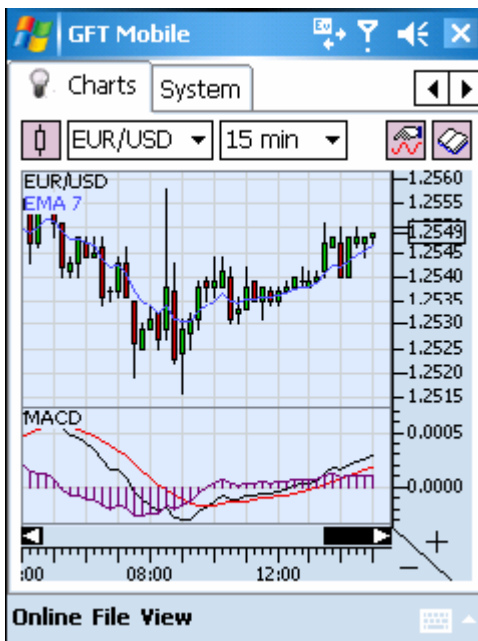
Symbol	BID	ASK	PL
EUR/NZD	1.9004	1.9016	
EUR/PLN	3.8781	3.8881	
EUR/SEK	9.2559	9.2609	
EUR/USD	1.2548	1.2551	
EUR/ZAR	9.4567	9.4817	
GBP/AUD	2.4728	2.4743	
GBP/CAD	2.1093	2.1108	
GBP/CHF	2.3581	2.3589	
GBP/DKK	11.0320	11.0370	
GBP/HUF	391.18	393.18	



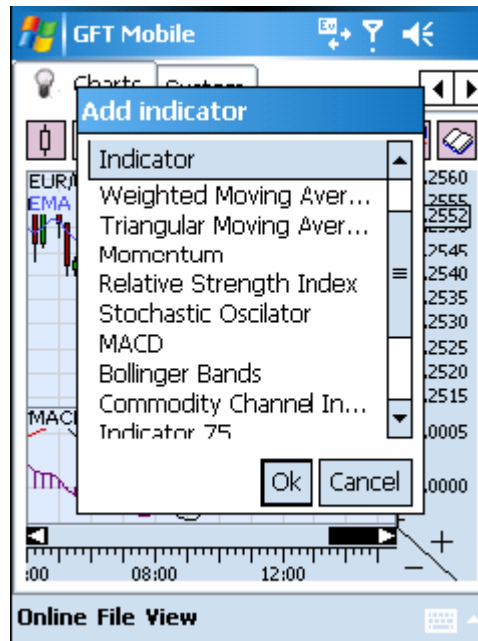
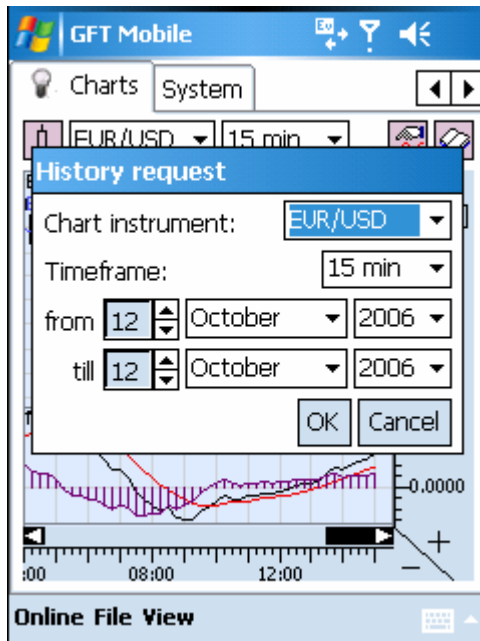
This screenshot is identical to the previous one, but with a context menu open over the EUR/USD row. The menu options are: View chart, View position, New order, and Change subscr.

Symbol	BID	ASK	PL
EUR/NZD	1.9004	1.9016	
EUR/PLN	3.8781	3.8881	
EUR/SEK	9.2559	9.2609	
EUR/USD	1.2548	1.2551	
EUR/ZAR	9.4567	9.4817	
GBP/AUD	2.4728	2.4743	
GBP/CAD	2.1093	2.1108	
GBP/CHF	2.3579	2.3587	
GBP/DKK	11.0320	11.0370	
GBP/HUF	391.18	393.18	

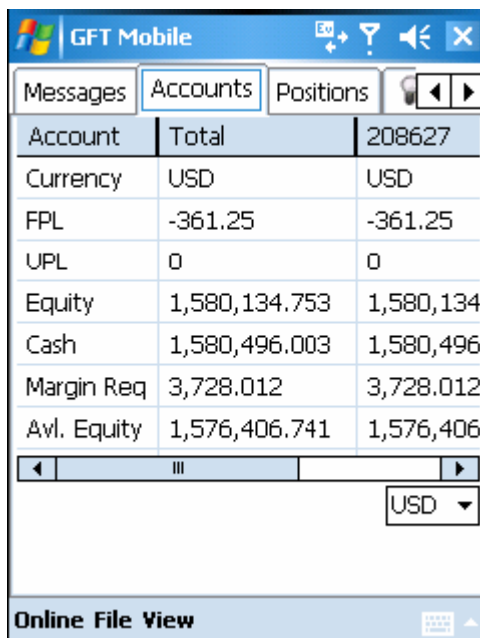
12. Other tabs include the Charts:



### Historic Charts and indicators:

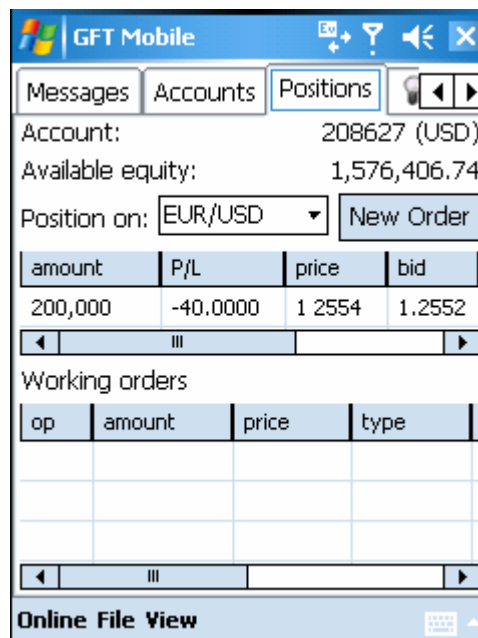


### Order History and Transfer History:



Account	Total	USD
	208627	
Currency	USD	USD
FPL	-361.25	-361.25
UPL	0	0
Equity	1,580,134.753	1,580,134
Cash	1,580,496.003	1,580,496
Margin Req	3,728.012	3,728.012
Avl. Equity	1,576,406.741	1,576,406

USD



Account: 208627 (USD)

Available equity: 1,576,406.74

Position on: EUR/USD

amount	P/L	price	bid
200,000	-40.0000	1 2554	1.2552

Working orders

op	amount	price	type



## Basic Screens

Login masks:



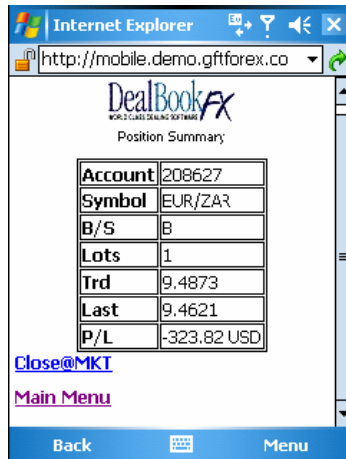
Menus and current prices:



Open orders and open positions:



Order mask and symbol selection:



### III. FAQ

**1. Q: I am receiving the "Login Error - Username/password incorrect"**

**A:** Make sure you have logged off all other connections (i.e. PC connections with FlatTrader). Also, check to make sure you have selected the proper System selection (i.e. Demo or Live)

**2. Q: My mobile device disconnects approximately every 10 minutes.**

**A:** This issue can occur on a number of networks and is generally due to a poor signal or low battery. A poor internet connection or low connection speed may cause FXFLAT Mobile to disconnect periodically.

**3. Q: After I log into the FXFLAT Mobile client the splash screen appears to freeze.**

**A:** It may take up to 2-5 minutes to login to the client. There are many variables as to the reason for this, but mostly depends on the integrity of your connection.

**4. Q: I have logged off all my connections on my desktop computer, but I am still getting the "Login Error - Username/password incorrect" popup screen**

**A:** Reset your device (usually a small reset button on the back of the device) and reestablish your connection. This will clear any conflicting connections on your device.